

Scorpion II TL-3 TMA

TRUCK MOUNTED ATTENUATOR



Scorpion II TL-3 TMA - is the world's first MASH Tested, Passed, and Eligible Truck Mounted Attenuator.

TMA's are designed to protect workers and motorists from impacts with stationary or slow-moving trucks utilised in work zones and maintenance operations. The TMA is mounted to a shadow vehicle for purposes of protecting the work crew in front of the shadow vehicle and protecting the motorist that might drive into the lane closed off by the shadow vehicle.

Infinite Weight Eligible

- Can be used on a host truck vehicle weight of only 6,804 kg up to infinite weight.

Curved Aluminium Tube Frame

- Exceptionally strong, providing protection against nuisance impacts with re-directional capacity along the entire length of the TMA.

Modular Design

- When impacted, the Scorpion II crushes in progressive stages, which results in lower repair costs and easy parts replacement.

Open Cartridge Design

- Reduces wind resistance and increases fuel efficiency in storage and transport mode.

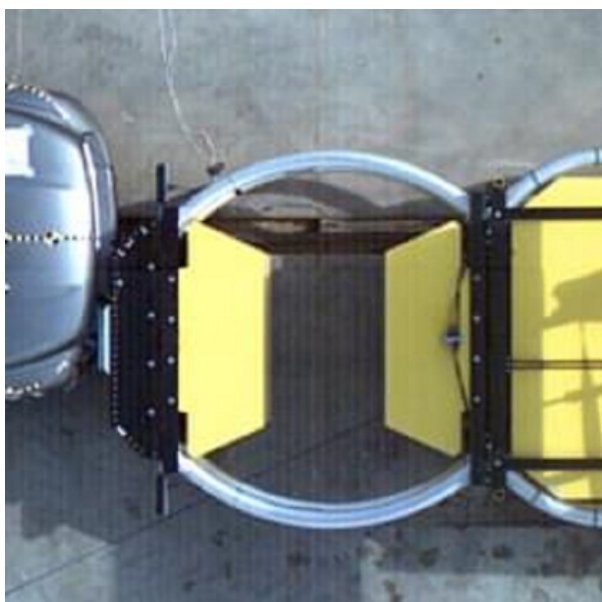
Energy Absorbing Cushions

- Moisture proof aluminium honeycomb core, enclosed by aluminium powder coated modules providing maximum durability and longevity.

Full Width Impact Protection

- Safely protects and redirects the impacting vehicle away from the "coffin corner" area at the rear of the truck.

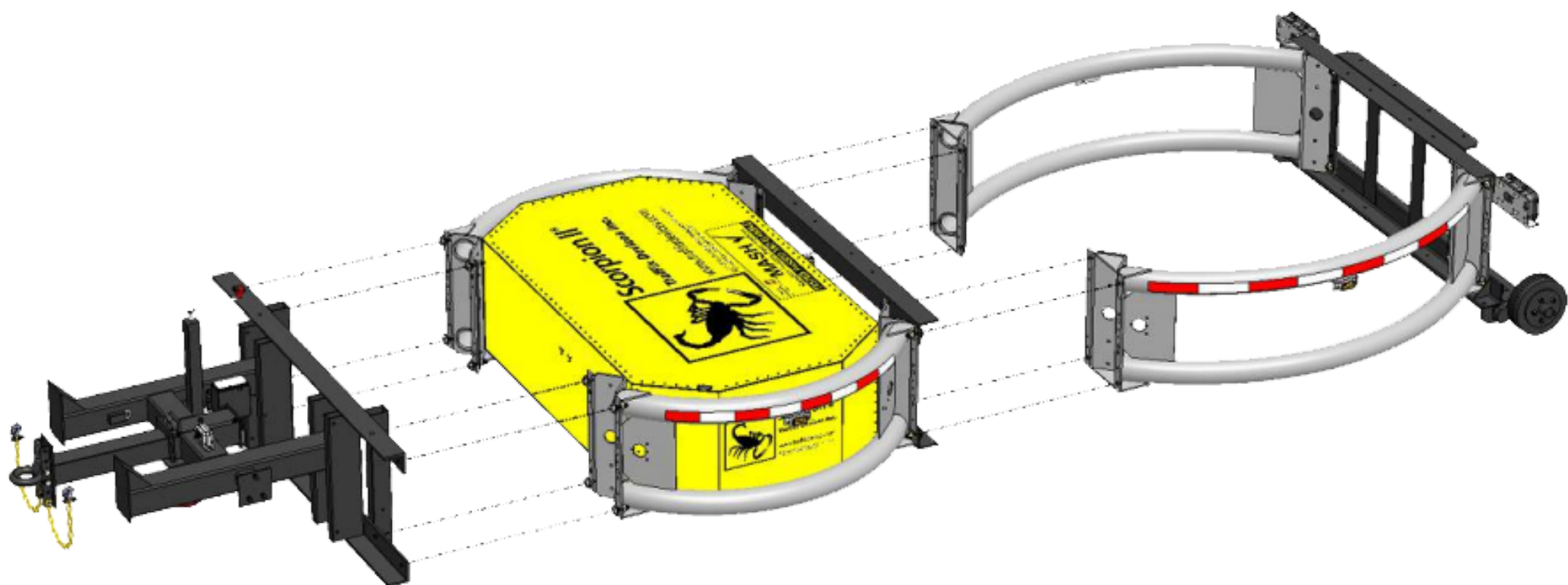
Crash Test



Scorpion II TL-3 TMA

SPECIFICATION

Weight	900kg
Length (From Back Of Vehicle)	
- Travel / Storage	785mm
- Deployed	4225mm
Width	2475mm
Height (From Ground)	
- Travel / Storage	3200mm
- Deployed (Ground Clearance)	305mm ± 25.4 mm



LGC
EQUIPMENT HIRE



1300 047 880



info@lgchire.com.au



www.lgchire.com.au